

# 2025-2026 Group Visit Guide

Exhibits • Workshops • Programs



Informal, hands-on STEM experiences lead kids to develop thoughtful scientific behaviors!



200 Museum Drive, Lansing, MI 48933 | (517) 485-8116

[impression5.org](http://impression5.org) • [@myimpression5](https://twitter.com/myimpression5) • [facebook.com/impression5](https://facebook.com/impression5)

 **PLEASE RECYCLE**

# Interactive Exhibits

**Impression 5 Science Center's exhibit area provides a self-chosen, learner-directed environment with the tools and freedom to interactively discover science! Explore the exhibit area in a path that suits your interests while making meaningful connections with science.**

## First Impression Room

The *First Impression Room* is a space for young scientists from birth to age four to experience and learn about science in a comfortable and customized environment. It's complete with a family restroom, private nursing room, Crocs™ and aprons for the water area, and more!

## FLOW: A Water Experience

FLOW explores fluid dynamics with interactive components and activities! Build and test your own sailboat, explore a vortex, power a giant flywheel that shoots a two-story geyser, play with water jets, and more, all while soaking up the science of the world's most magnificent natural resource—water!



## Build Zone

What types of structures can you build? How does gravity, tension, and compression affect your structure? Get ready to become an engineer as you build with a variety of materials. *Build Zone* features magnetic Panelcraft, bridge building, blocks, and more! This exhibit promotes team building and problem solving. What will you create together?

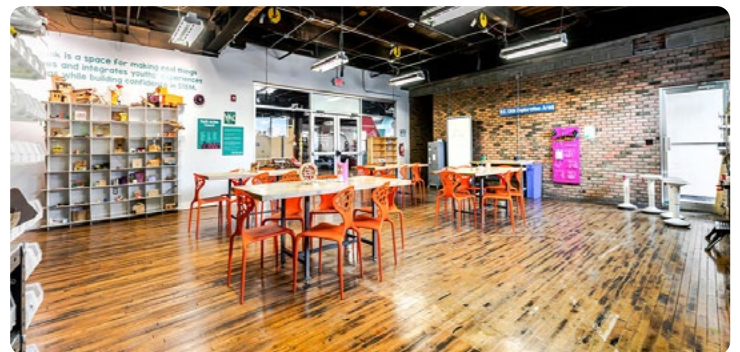


## Throwing Things

Where does the energy come from to launch a ball through the air? Experiment with kinetic and potential energy using air cannons, trebuchets, and bottle rockets as your tools! Explore the laws of motion, ballistics, and energy while pitching, launching, and catapulting with high-energy activities that integrate new technology.

## Think Tank

Discover a space for student innovators ages 9 and up to put their minds and hands to the test as they experience a true maker lab! Turn your ideas into reality with real tools, real challenges, and real outcomes! Whether you have 10 minutes or the whole afternoon, *Think Tank* will keep your mind and imagination innovating. Open hours vary.

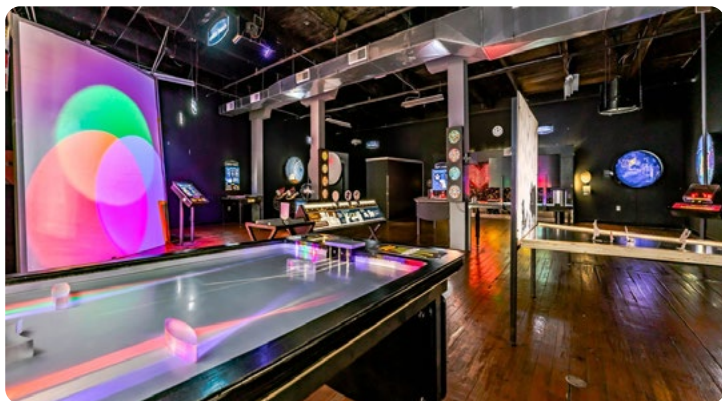




# Interactive Exhibits

## Spectrum

Explore the electromagnetic spectrum and test different light sources, lenses, prisms and mirrors, and more! Step up to our life-size Light Mosaic to create your own colorful masterpiece, then strike a pose at the Shadow Wall. You can see how plasma reacts to a conductor and experiment with primary colors!



## Chew On This!

Explore the science of your mouth by using microscopes and magnifying lenses to see teeth like never before. Play with a giant mouth as you discover how your mouth works, why it's important for eating and communicating, and how to care for your teeth. Say *ahhhhh!* as you dive deeper into the science of your mouth!

## SMASH: A Nuclear Adventure

Experience the world of nuclear science by building atoms, discovering ways to create new isotopes, using models to explore concepts you can't see, and imagining what the future of nuclear science holds!



## MI Nature

What does the world look like through the eyes of a naturalist? Explore the natural environments of Michigan while never setting foot outside the Science Center! With a variety of new technological tools, challenge your thinking skills as you get up close and personal with living systems, just like a naturalist in the field!



## POP! A Bubble Experience

In *POP!*, explore how soap and water molecules interact to create the structure of a bubble. Learn about the chemistry of soap films, create beautiful forms and colors, and even stand inside a giant bubble!

## Megawatt

We're excited to introduce Megawatt, the newest permanent exhibit at your Science Center! This interactive exhibit will help you explore the science behind electricity production throughout Michigan! Understand the relationship between the choices we make in energy production and the impact those choices have on the environment around us. What will the future of electricity production in Michigan look like? In Megawatt, you can decide!



# Workshops & Experiences

## Add workshops or experiences to enhance your epic group science adventure!

Choose between Science Experiences or In-Depth Science Workshops that meet Next Generation Science Standards!

### Science Experiences (25-30 min.)

#### Solar System Exploration

Jump into the solar system with this hands-on art workshop and create your own scale model solar system. Dive into the world of planets by learning about size and scale, and organize them to orbit around the sun. Each learner will take their own art model home.

**Fee:** \$2.00/student **Grades:** Preschool to 1st grade

#### Slime

Discover how molecules interact in solids and liquids! Learn about other basic chemistry principles, such as physical and chemical changes. Learners then mix ingredients to create their own colorful slime to take home!

**Fee:** \$3.00 /student **Grades:** All

#### Light

Explore the fascinating world of light! Identify various sources of light and explore the concepts of reflection and diffraction with hands-on experimentation.

**Fee:** \$2.00/student **Grades:** 1st grade and up

#### Static Electricity (Only available Sept. 2025 - April 2026)

Experiment with different uses of static electricity and explore conductors, insulators, and more! Learners see firsthand the powerful effects of static electricity with our Van de Graaff generator in a shocking and hair-raising experience.

**Fee:** \$2.00/student **Grades:** K and up



### In-Depth Science Workshops

#### Biospheres (30 min)

Learners explore water and carbon cycles while making a biome. Get their hands in the dirt and explore what's needed for a seed to grow. Plus, each learner brings home their own biosphere!

**Fee:** \$3.00/student **Grades:** All

#### Force & Motion (45 min)

Explore the science of force and motion, and participate in a variety of challenges to help build an understanding of motion, speed, gravity, friction, and force!

**Fee:** \$3.00/student **Grades:** All

#### Engineering Design Challenge (45 min)

Sail to the finish line in this collaborative design process challenge! Create the mast and sail for a wind powered car and test your success through different iterations as you improve your design plans and bring them to life!

**Fee:** \$3.00/student **Grades:** All

#### Circuit Builders with Renewable Energy (30 min)

Experiment with Snap Circuits, alter the path of an electron, discover power sources, and investigate the difference while discovering the power of renewable energy in this hands-on, exploratory workshop.

**Fee:** \$2.00/student **Grades:** 2nd grade and up





# School Programs

Experience hands-on STEM-focused programs, exhibits, and workshops with your students! Leave it to Impression 5 to bring science to life and introduce intriguing content to help your students make meaningful connections to science principles through these unique Science Center programs. All lessons and activities are designed to follow Next Generation Science Standards and can be adapted to what your students need.



## BIG Science Lesson

In this 4-day program, your students will be fully immersed in science as they explore concepts like moon phases, engineering design, natural disasters, and more! All lessons and activities are co-developed between Impression 5 staff and teachers to target specific Next Generation Science Standards.

### Impression 5 staff provide:

- Interactive presentations
- Hands-on experiments
- All lesson materials
- Exhibit-based investigations
- Behind the scenes tours

### You provide:

- Transportation
- A journal for each student

**Fee:** \$48/student per week (Tuesday-Friday only)



## Generation Science

This program combines the experience of a visit to the Science Center with a visit from us to your classroom! Students will have the opportunity to explore science by doing hands-on activities in their very own classroom, and then join us for a full day at Impression 5!

### Impression 5 staff provide:

- Interactive presentations
- Hands-on experiments
- All lesson materials
- Exhibit-based investigations

### You provide:

- Transportation
- A journal for each student

**Fee:** Price varies – please contact for more information.

## Custom Science Days

Not seeing something that will work for you? With custom science days, we can work together to create a program that will better fit the needs of your students.

**Fee:** Price varies – please contact for more information.

**For additional information please contact Betsy Mappilaparampil at (517) 485-8116 ext. 205 or [mappilaparampil@impression5.org](mailto:mappilaparampil@impression5.org).**



# Plan Your Visit!

Choose the exhibits, workshops, and programs you want to experience based on your classroom's specific needs and learning goals!

## Options to consider for your visit:

### Group Admission Rate

Schools and other established organizations are eligible for a group admission rate of \$10.00 per child with a reservation. Teachers and staff accompanying a reserved group receive FREE admission. All chaperones with the group will be charged the standard group rate of \$10. Regular admission applies to chaperones who are separate from the group reservation and paying individually.

### Scholarships

Need-based scholarships are available for students who want to participate in Impression 5 programs. For more information, please contact our Reservations Coordinator at (517) 485-8116, ext. 132 or [apply online](#).

### Lunch Area

If you choose to visit us during mealtime, you can reserve our group lunch area for your students and chaperones. Our lunchroom accommodates up to 85 guests!

**Fee:** \$25.00/25 minutes

### Spark! STEM Toys & Gifts

Be sure to make time for shopping in Impression 5's science store during your visit. Our gift store is fully stocked with educational toys, t-shirts, and unique gift items. You can also browse a large selection of science books for a variety of reading levels. Don't let the science discovery end when you leave!

## Before you call, please be prepared with the following information:

1. Name of your school or organization.
2. Date you'd like to visit (and two alternates, just in case).
3. Your planned arrival and departure times.
4. Your phone number and email address.
5. Name and phone number of the person in charge on the day of your visit, if different from above.
6. Your group's address for confirmation and billing.
7. Number of students, teachers/staff, and adult chaperones in your group.
8. Age or grade level of the students.
9. Any lunch or shopping plans.
10. Workshops you would like to reserve.
11. Your mode of transportation (e.g. carpool or school bus).
12. Any additional/special accommodations needed.

[You can also submit your group visit requests online!](#)

Once your reservation is complete, we will send you a confirmation email including logistical details, a parking map, and an invoice to assist you in preparing payment.

Payment is required on or before the date of your visit.

## Need assistance planning your visit?

Contact our Reservations Coordinator if you:

- Have any questions
- Need ideas to make the most of your visit
- Need help choosing a date/time for the best experience
- Need to discuss any accommodations
- Would like to reserve additional resources during your visit:
  - Sensory backpacks (headphones, social stories, fidgets)
  - Adult or child wheelchair
  - Weighted blanket
  - Sensory room access

### Impression 5 Information

**Visit:** Impression 5 Science Center  
200 Museum Drive  
Lansing, MI 48933

**Call:** **Science Center: (517) 485-8116**

- Reservations Coordinator: Ext. 132
- Big Science and Custom Lessons: Ext. 205

**Email:** [reservations@impression5.org](mailto:reservations@impression5.org)

**Park:** **On-site parking is limited;** we strongly recommend chaperones carpool.

Bus parking available only on Museum Drive.

# Information for the Day of Your Visit

For any changes to your reservation, please call our Reservations Coordinator at (517) 485-8116 ext. 132. Changes requested less than two weeks before your visit may not be possible.

## Arrival

- **We recommend that chaperones carpool or ride on buses if possible, as free onsite parking is limited.**
- If arriving via bus or minibus, please wait in the bus drop off lane as indicated on the map and have the group stay on the bus until directed otherwise by a staff member.
- Running late? Please call our Reservations Coordinator at **(517) 485-8116 ext. 132** as soon as possible.

## Reserved Experiences

- Your group will receive maps marked with the locations of your workshops and lunch room reservations when you arrive.
- If your group has multiple workshop sessions, please assign students to specific times before your visit.
- Please note that our lunch room space is shared between group visits and daily guests, so we are only able to accommodate your group in this space during your reserved time(s).

## Other Tips

- The First Impression Room is reserved for our youngest learners, ages birth to four years old. If your group has children in this age range, we would appreciate if a maximum of 20 guests visit the First Impression Room at once to allow space for daily visitors as well.
- If your group is planning to shop at our gift shop, we ask that you spread out shopping over your entire visit. It is helpful for adults to accompany shoppers, as calculating taxes can be tricky and opening packaging can be tempting.
- There are restrooms on both floors – single person restrooms are on the first floor, and multi-stall restrooms are on the second floor. Water fountains and bottle fillers are located near both restrooms.
- The Guest Services desk on the first floor is a good place to ask for information, check in if lost, find first aid, or look for a missing item.
- After your group's orientation, we will connect with the group leaders to get an accurate count and collect payment.





200 Museum Drive  
Lansing, MI 48933

**Click:** [impression5.org](http://impression5.org)

**Share:** [@myimpression5](https://www.facebook.com/impression5)

NON-PROFIT  
ORGANIZATION  
U.S. POSTAGE PAID  
LANSING, MI  
PERMIT NO. 304

**PLAY • CREATE • CHALLENGE**